

MathWorks®

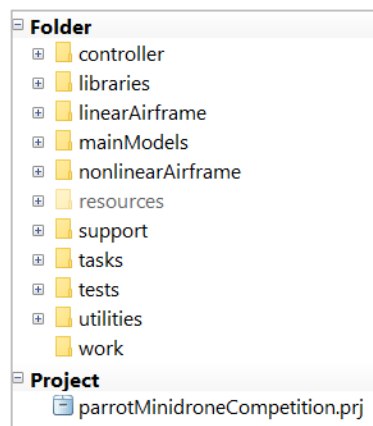
FOLLOW THE PATH CHALLENGE

Entry Submission Instructions

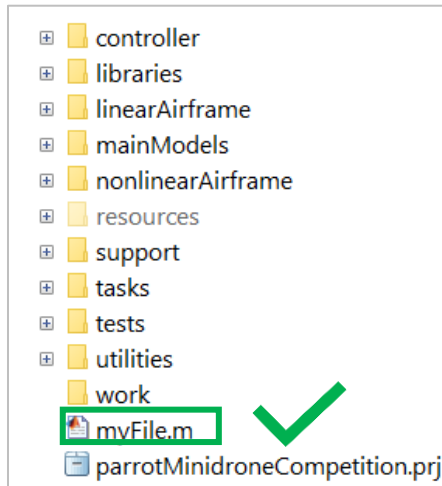
To submit an entry, the team captain needs to upload the [Project](#) files on the provided link by 23-Dec-2022, 5.00 PM EST (GMT -4).

1. Ensure the correct folder structure:

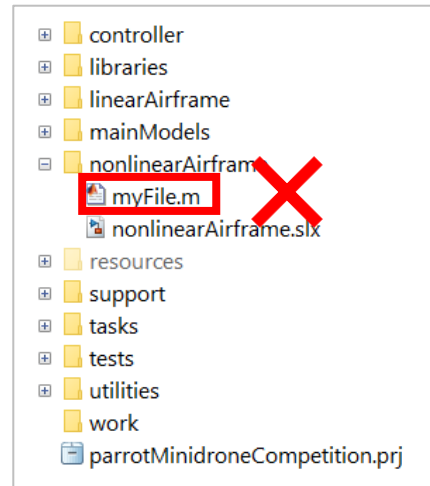
- Ensure that you retain the original file and folder structure from the parrotMinidroneCompetition project (from the Simulink Support Package for Parrot Minidrones). The original folder structure looks like the following:



- Ensure that all the Simulink models and MATLAB files have the same names as in the original parrotMinidroneCompetition project.
- Do not add any Simulink models or MATLAB files to the subfolders. If you have written any additional MATLAB files or Simulink models, you can add them to the main parrotMinidroneCompetition model folder. For example, if you have created a new file supporting your model called myFile.m, add the file to the folder as shown by the screenshot with the check mark. Do not add the files inside a subfolder:



myFile.m outside the subfolders

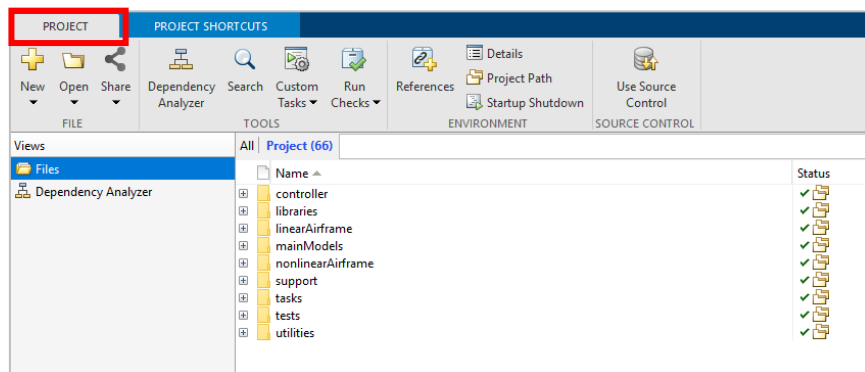


myFile.m present inside a subfolder

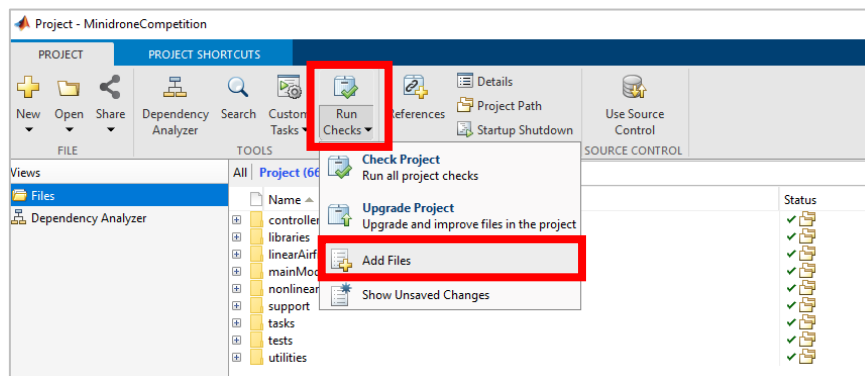
2. Add additional files to the project

Note: Move to (3) *Submit Project Archive* if there aren't any additional files to be added.

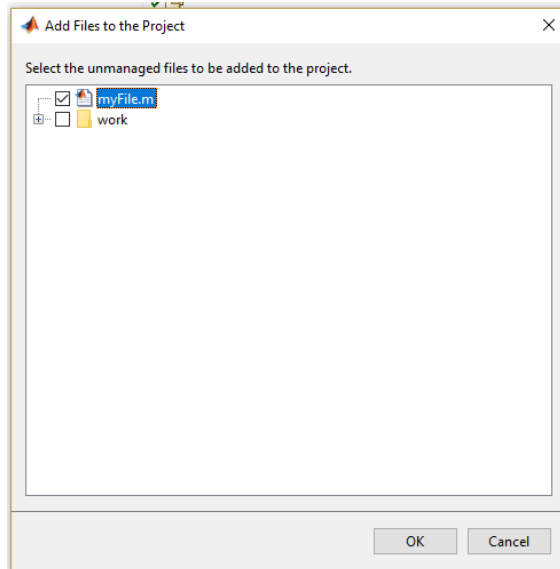
- Add the necessary files to the Project by navigating to Project tab



- Select Run Checks → Add Files.

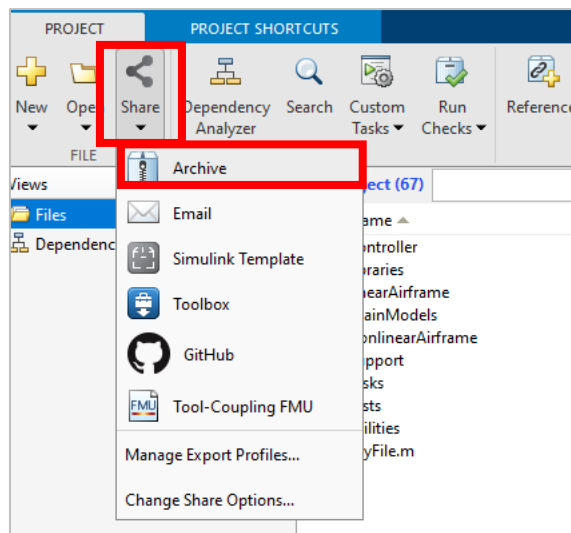


- Check the boxes for the necessary files and click OK.



3. Submit the Project Archive

- In the Projects folder, click on Share and then select *Archive*.



- Select *Export Profile* as 'Whole Project' and name the Project Archive as <TeamName> where <TeamName> is the name of your team.
- Upload the renamed [Project](#) file to the provided link for submission.